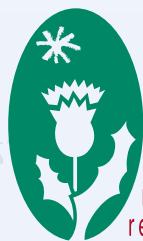




Collared Flycatcher



Parc  
naturel  
régional  
de Lorraine

## WHERE TO WATCH BIRDS (and other wildlife) IN LORRAINE PARC NATUREL REGIONAL

The Lorraine Parc Naturel Regional is located in the northeast of France, not far from Metz and Nancy.

35 % of the territory is covered with forest and with its numerous lakes make up a fragile and important network of natural heritage. Close to Belgium, Luxembourg and Germany, is a paradise for naturalists from abroad.

288 species of birds have been identified within the Parc and many sites allow visitors to see many of these species. The Nature Reserves of Madine, Lachaussée and the Lindre Estate with lakes are now equipped for bird watching. Two of these reserves (Lachaussée and Lindre) are recognized as prestigious international RAMSAR sites. The interest of these two remote areas, just 60 km apart, for aquatic birds is quite similar but they do have very different lowland agricultural species.

Some endangered species still occur: Bittern, Little bittern and Purple heron all breed. There are other rare species: Montagu's Harrier, Little Crane and Collared Flycatcher. And species with special habitat requirements such as: Corncrake, White and Black Storks, Osprey, Eagle and Short-eared Owls.

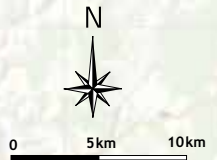
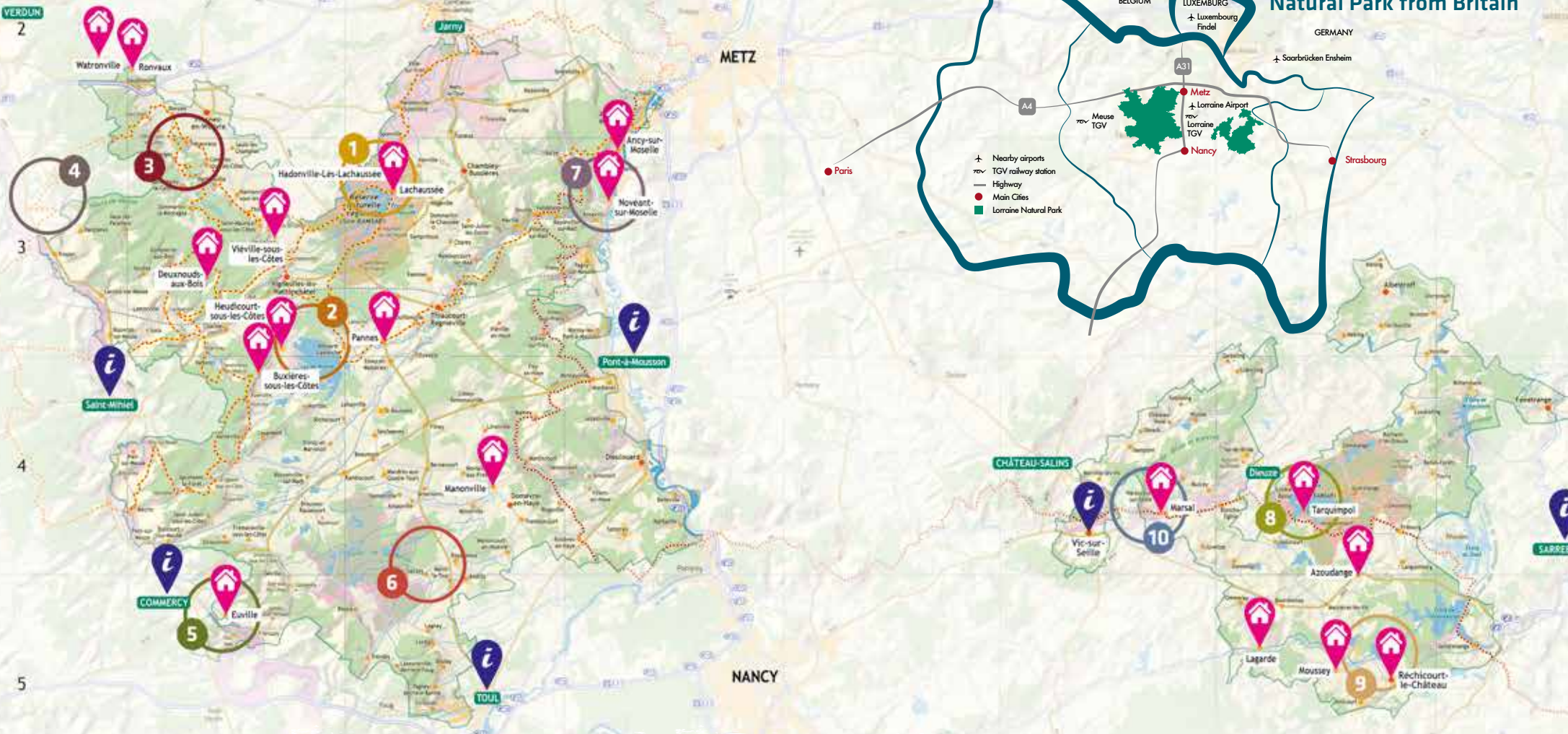
Lorraine is also a stopover, sometimes for long periods, for very many migratory birds (Cranes...) and a wintering area for many northern species.

The peaceful coexistence of birds and man begins around the rural houses in the Lorraine with their huge roofs that are perfect for nesting swallows and martins and gardens that extend onto "Mirabelle" (a delicious local plum) orchards.



# AREAS TO WATCH BIRDS IN LORRAINE PARC NATUREL REGIONAL

## How to get to the Lorraine Natural Park from Britain



Tourist information	Area 3 - page 6	Area 7 - page 14	Highways	High-speed railway	Jarny City
Accommodation partners	Area 4 - page 8	Area 8 - page 16	Local road	Hiking trail	RAMSAR zone
Area 1 - page 2	Area 5 - page 10	Area 9 - page 18	Other road	Local hiking trail	Natura 2000 zone
Area 2 - page 4	Area 6 - page 12	Area 10 - page 20	Railways	Boundaries of the Lorraine parc naturel regional	

# Tourist information



## **Office de Tourisme Cœur de Lorraine**

Rue du Palais de Justice  
55300 Saint-Mihiel

Tel.: +33 (0) 329 890 647

[www.coeurdellorraine-tourisme.fr](http://www.coeurdellorraine-tourisme.fr)

## **Office de Tourisme du Pays de Commercy**

Château Stanislas  
55200 Commercy

Tel.: +33 (0) 329 913 316

[www.tourisme-pays-de-commercy.fr](http://www.tourisme-pays-de-commercy.fr)

## **Office de Tourisme de Pont-à-Mousson**

Place Duroc  
54700 Pont-à-Mousson

Tel.: +33 (0) 383 810 690

[www.tourisme-pontamousson.fr](http://www.tourisme-pontamousson.fr)

## **Maison du Tourisme en Pays Terres de Lorraine**

1 Place Charles De Gaulle  
54200 Toul

Tel.: +33 (0) 383 649 060

[www.lepredenancy.fr](http://www.lepredenancy.fr)

## **Office de Tourisme du Pays du Saulnois**

Hotel de la Monnaie  
Place du Palais

57630 Vic-sur-Seille

Tel.: +33 (0) 387 011 626

## **Office de Tourisme du Pays de Sarrebourg**

2 rue du Musée  
57400 Sarrebourg

Tel.: +33 (0) 387 031 182

[www.tourisme-sarrebourg.fr](http://www.tourisme-sarrebourg.fr)



Common Merganser

# Species index

Species	Areas	Page
Aquatic Warbler	8 ; 9	17 ; 19
Black Kite	1 ; 6 ; 8	3 ; 13 ; 17
Black Stork	6 ; 8	13 ; 17
Black Tern	2	5
Black Woodpecker	5	11
Black-necked Grebe	8	17
Bluethroat	8	17
Cirl Bunting	7	15
Collared Flycatcher	1 ; 2 ; 6 ; 8	3 ; 5 ; 13 ; 17
Common Crane	1 ; 6	3 ; 13
Common Kestrel	4	9
Common Kingfisher	7	15
Common Nightingale	10	21
Common Quail	10	21
Corn Bunting	10	21
Corn Crake	10	21
Eagle Owl	4 ; 5	9 ; 11
Eurasian Bittern	1 ; 2 ; 6	3 ; 5 ; 13
Eurasian Curlew	10	21
Eurasian Golden Oriole	8	17
Eurasian Hobby	6 ; 8	13 ; 17
Eurasian Penduline Tit	9	19
Eurasian Tree Sparrow	8	17
Eurasian Wryneck	3	7
European Nightjar	4	9
European Stonechat	8 ; 10	17 ; 21
Gadwall	2	5
Garganey	8	17
Great Egret	2 ; 9	5 ; 19
Green Sandpiper	9	21
Greet Reed Warbler	2 ; 9	5 ; 19
Grey Wagtail	7	15
Greylag Goose	2 ; 8	5 ; 17
Honey Buzzard	1 ; 6 ; 8	3 ; 13 ; 17

Species	Areas	Page
Hen Harrier	2	5
Hoopoe	3	7
Lesser Spotted Woodpecker	8	17
Little Bittern	1 ; 8 ; 9	3 ; 17 ; 19
Little Crake/ Spotted Crake	1 ; 2	3 ; 5
Little Gull	2	5
Little Owl	10	21
Marsh Harrier	1 ; 2 ; 6 ; 8 ; 9	3 ; 5 ; 13 ; 17 ; 19
Marsh Warbler	8	17
Meadow Pipit	5	11
Middle Spotted Woodpecker	1 ; 6 ; 8	3 ; 13 ; 17
Northern Goshawk	3 ; 4 ; 6	7 ; 9 ; 13
Northern Lapwing	1	3
Osprey	1 ; 2 ; 6 ; 8	3 ; 5 ; 13 ; 17
Peregrine Falcon	4	9
Purple Heron	1 ; 2 ; 8 ; 9	3 ; 5 ; 17 ; 19
Red crested Pochard	8	17
Red Kite	6	13
Red throated Diver	8	17
Red-backed Shrike	1 ; 2 ; 3 ; 6 ; 7 ; 9	3 ; 5 ; 7 ; 13 ; 15 ; 19
Redwing	1	3
Spotted Crake	9	19
Savi's Warbler / Common Grasshoper Warbler	1 ; 8 ; 10	3 ; 17 ; 21
Water Rail	1 ; 9 ; 10	3 ; 19 ; 21
Whinchat	10	21
White Stork	8	17
White-fronted Goose	2	5
White-tailed Eagle	1 ; 2 ; 6 ; 8	3 ; 5 ; 13 ; 17
White-throated Dipper	7	15
Wood Sandpiper	8	17
Wood Warbler	3 ; 8	7 ; 17
Woodlark	3	7
Woodcock	1	3

## Birds (Area 1)

# LACHAUSSÉE REGIONAL NATURE RESERVE AND DISCOVERY WETLANDS INTERPRETATION TRAIL.



Extraits des fonds cartographiques - IGN Paris 2015 - Autorisation n°70 15001

Hike: 11 km (6.84 miles) / 3 hours

- Place to leave your car Most interesting area Public hide Interpretation trail

Lachaussée lake is a site of major biological importance (RAMSAR). It covers 300 hectares and is surrounded by many smaller ponds that allow species living in the area to move from one pond to another. Extensive reedbeds are favourable for rare breeding species such as Bittern and Marsh harrier. Bushy areas surrounded by wet meadows are the haunt of many other wetland species. The forest serves as a filter for many of the water bodies, protecting them and ensuring their water quality.

Three bird hides including an observation tower offer an interesting perspective over the natural part of the lake (northern corner) and a view over the reed beds.



## To be seen in the area:

Common Crane • White-tailed Eagle •  
Eurasian Bittern • Marsh Harrier •  
Little Bittern • Purple Heron •  
Osprey • Middle Spotted Woodpecker •  
Collared Flycatcher • Little Crane • Savi's Warbler •  
Water Rail • Redwing • Northern Lapwing •  
Honey Buzzard • Red-backed Shrike •  
Black Kite • Woodcock



## Where to sleep? (accommodation partners)

- 1** **Cottage "Le Miradon"**  
55210 Hadonville-Les-Lachaussée (Map datum: C3)

Tel.: +33 (0) 659 604 968  
peltre@gmail.com  
www.gitemiradon.com  
**> 6 people (3 rooms)**

- 2** **Bed and Breakfast "La Bottée"**  
55210 Viéville-sous-les-Côtes (Map datum: B3)

Tel.: +33 (0) 329 899 812  
labottee@gmail.com  
www.labottee.com  
**> 3 rooms**



Common Crane

## Wildlife information Conservatoire d'espaces naturels de Lorraine

Tel.: +33 (0) 382 208 800  
www.cren-lorraine.fr

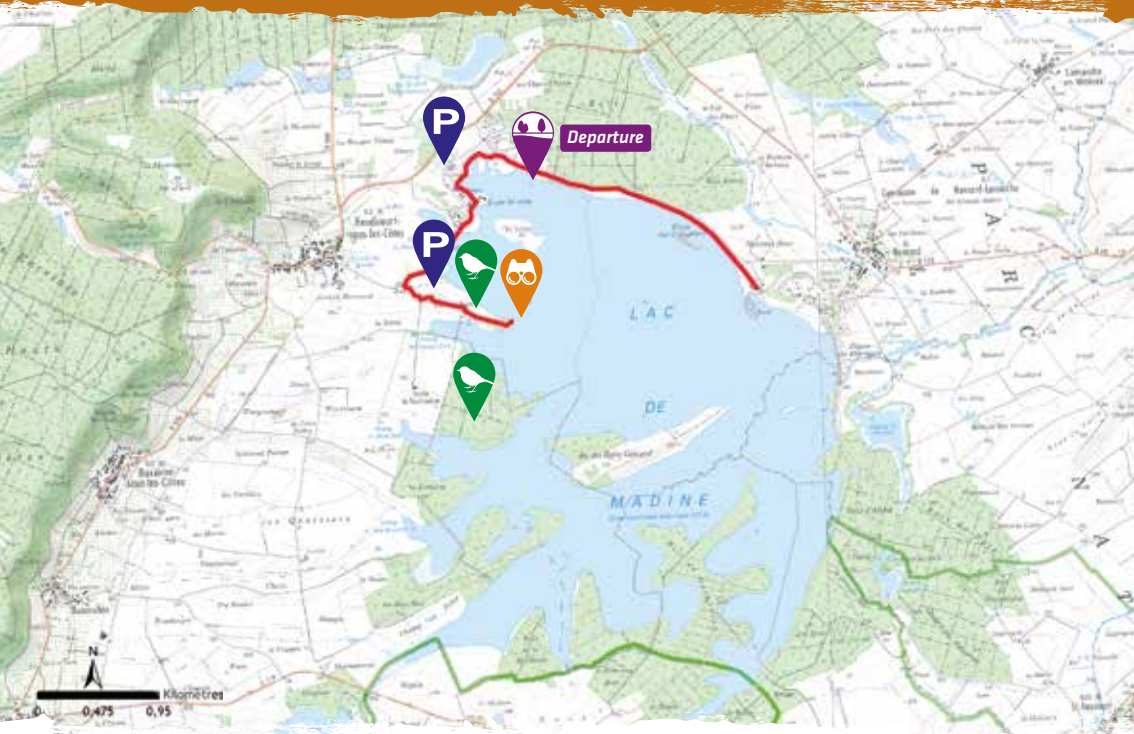


## Restaurant and shop (local products) Domaine du Vieux Moulin

55210 Lachaussée  
Tel.: +33 (0) 329 893 602  
www.etang-de-lachaussee.com  
Open from Monday to Sunday

## Birds (Area 2)

### MADINE LAKE - NATIONAL NO-HUNTING AND WILDLIFE RESERVE. ORNITHOLOGICAL INTERPRETATION TRAIL.



Extraits des fonds cartographiques - IGN Paris 2015 - Autorisation n°70 15001

Hike: 5.5 km (3.42 miles) / 1.5 hour

- Place to leave your car Most interesting area Public hide Interpretation trail

The National no-hunting and wildlife Reserve covers 1800 ha. It is of primary importance for migrant aquatic birds. Its natural richness make a migratory stopover and wintering site for nearly 250 species of birds. Indeed, in winter this area can hold more than 10,000 waterbirds.

It is also a very good site for wintering waterfowl such as Common Goldeneye, the Red-breasted Merganser or Smew. It is during migration that bird diversity is at its high. A nature-trail with signboards translated into English will help you to learn more. This trail leads to a hide that offers stunning views over the lake and the reedbed.



### To be seen in the area:

Great Egret • Eurasian Bittern • Greylag Goose • Gadwall • Osprey • Marsh Harrier • Hen Harrier • Little Gull • Black Tern • Great Reed Warbler • Red-backed Shrike • White-tailed Eagle • Purple Heron • Collared Flycatcher • Little Crake • White-fronted Goose



### Where to sleep? (accomodation partners)

#### 3 Cottage "Les berges du Lac de Madine" 55210 Heudicourt-sous-les-Côtes (Map datum: B3)

Tel.: +33 (0) 329 900 280  
gite-berges-lac-madine@laposte.net  
www.gites-berges-lac-madine.fr  
**> 4 people**



#### 4 Cottage "Le vieux pressoir" 55210 Buxières-sous-les-Côtes (Map datum: B4)

Tel.: +33 (0) 662 965 807  
**> 10 people (5 rooms)**

#### 5 Cottages "Les gîtes du Holit" 54470 Pannes (Map datum: C3)

Tel.: +33 (0) 383 819 971  
maryline.andre@gitesduholit.com  
www.gitesduholit.com  
**> 5 people (2 cottages)**



Red-backed Shrike

### Wildlife information Parc naturel régional de Lorraine

Tel.: +33 (0) 383 842 515  
www.pnr-lorraine.com

### Tourist information Syndicat Mixte du lac de Madine

Tel.: +33 (0) 329 893 250  
www.lacmadine.com



### Shop (local products) Chèvrerie de Chaillon

32 Grande Rue  
55210 Chaillon

Tel.: +33 (0) 329 900 939  
Open from Tuesday to Saturday

## Birds (Area 3)

### CÔTES DE MEUSE - POINT X ON THE EPARGES PEAK. WHEN NATURE TAKES ITS COURSE.



©IGN SCAN 25<sup>th</sup> - 2011 COPIE ET REPRODUCTION INTERDITES (données issues du protocole MEDAD)

Hike: 6 km (3.73 miles) / 2 hours

Place to leave your car Most interesting area

*"On relatively small areas, among the places where you can see a landscape, one whose view is the most beautiful is almost always the one that is the most tactically interesting from a military point of view" Yves Lacoste*

Nature always takes over, even after being torn apart by wars. Landscapes and ecosystems are finally transformed to be reborn in greenery. Symbol of violent fighting in 1915, the Eparges peak was a strategic site during the Great War.

The conflict above ground sinks underground and mine warfare begins. Funnels, tunnels, trenches or blockhouses are visual reminders of this war. Conifers were planted on the battlefield. Today, specific biodiversity has taken residence.

6



### To be seen in the area:

#### Birds:

Red-backed Shrike • Northern Goshawk • Wood Warbler • Woodlark • Eurasian Wryneck • Hoopoe

#### Others:

Wall and Sand Lizard • Yellow-bellied Toad • Grass Snake • European Tree Frog • Great Crested Newt • Wild Cat



### Where to sleep? (accommodation partners)

6

#### Cottage "Le Logis des Côtes"

55160 Ronvaux (Map datum: B2)

wurtz@lametairiedesvergers.com  
www.lametairiedesvergers.com

> 6 people



7

#### Bed and Breakfast

#### "La Métairie des vergers"

55160 Watronville (Map datum: A2)

wurtz@lametairiedesvergers.com  
www.lametairiedesvergers.com

> 3 rooms



Northern Goshawk

### Wildlife information Parc naturel régional de Lorraine

Tel.: +33 (0) 383 846 767  
www.pnr-lorraine.com



### Ecomuseum, biodiversity garden and shop (local products)

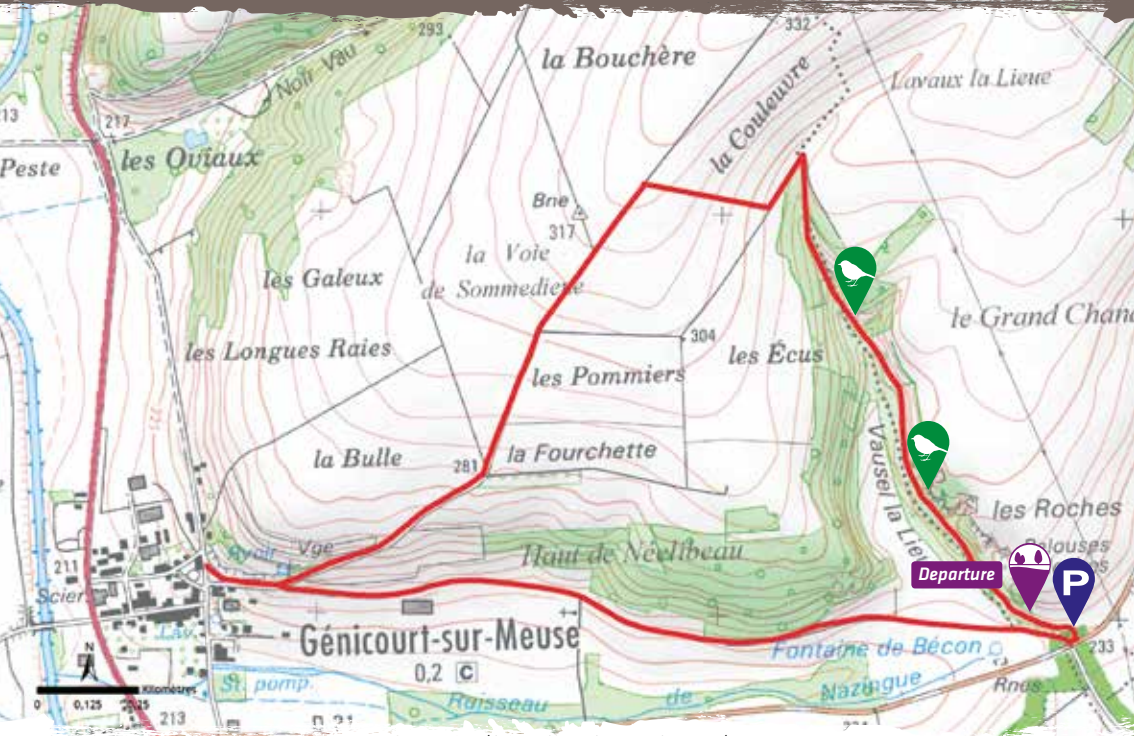
87 rue Chaude  
55210 Hannonville-sous-les-Côtes

Tel.: +33 (0) 329 873 294  
www.ecomusee-hannonville.com

7

## Birds and Orchids (Area 4)

### GÉNICOURT CALCAREOUS GRASSLANDS AND DISCOVERY INTERPRETATION TRAIL.



©IGN SCAN 25° - 2011 COPIE ET REPRODUCTION INTERDITES (données issues du protocole MEDAD)

Hike: 6 km (3.73 miles) / 2 hours

Place to leave your car Most interesting area Interpretation trail

155 million years ago, coral reefs in shallow waters covered the site of this old stone quarry. Debris of shells and skeletons of marine animals were deposited here. These skeletons form today's bedrock.

The 600 meter trail passes through many different habitats over what is a short distance, they have their various specific plants and animals.



To be seen in the area:

#### Birds:

Northern Goshawk • Eagle Owl • Peregrine Falcon • Common Kestrel • European Nightjar

#### Orchids:

Military Orchid • Pyramidal Orchid • Bee Orchid • Late Spider Orchid • Dark Red Helleborine

#### Others:

Pigamon rocks Lesser Meadow-rue • Helianthème • Common Polygala • Common Globular • Sand Lizard • Smooth snake • Burnets



Where to sleep?

(accommodation partners)

8

#### Bed and Breakfast "Le Ciel Bleu"

55210 Deuxnouds-aux-Bois (Map datum: B3)

Tel.: +33 (0) 970 261 405  
verhuur@lecielbleu.eu  
www.lecielbleu.eu  
> 5 rooms



Great Spotted Woodpecker

#### Wildlife information Conservatoire d'espaces naturels de Lorraine

Tel.: +33 (0) 382 208 800  
www.cren-lorraine.com

#### Parc naturel régional de Lorraine

Tel.: +33 (0) 383 846 767  
www.pnr-lorraine.com



#### Shop (local products) Coopérative fruitière "Jardin de Lorraine"

32 rue de la Mirabelle  
55210 Billy-sous-les-Côtes

Tel.: +33 (0) 329 893 224



## Birds, Orchids and Amphibia (Area 5)

### EUVILLE STONE QUARRY AND WETLAND GÉVAUD POND.



©IGN SCAN 25° - 2011 COPIE ET REPRODUCTION INTERDITES (données issues du protocole MEDAD)

Longer hike: 4 km (2.49 miles) / 1 hour

Place to leave your car Most interesting area Interpretation trail

#### Euville Stone Quarry

This site is unique in Lorraine not only because of the size of the quarries but also their history. An unexpected ecosystem is found due to the presence of rock scree, cliffs, grass sward and upsurging groundwater. The sand quarry supports many orchids in this arid environment.

#### Wetland Gévaud pond

The small Gévaud pond is set in a beautiful forest glen, where we find a source and a tuffaceous marsh. This fishpond, the bottom of which is covered with cobblestones was once used by monks to stock carp so that they cleaned themselves; carp caught in the ponds of the Reine forest. There are many amphibians including the Alpine and Palmate newts, the Midwife toad and the Common frog.



To be seen in the area:

#### Euville Stone Quarry

##### Birds:

Eagle Owl • Black Woodpecker • Meadow Pipit

##### Orchids and others plants:

Lizard Orchid • Fly Orchid • Bee Orchid •  
Military Orchid • Pyramidal Orchid •  
Dark Red Helleborine • Round Leaved Wintergreen •  
Late Spider Orchid

#### Wetland Gévaud pond

##### Amphibia:

Midwife Toad • Common Frog • Alpine Newt •  
Smooth Nenet



Where to sleep?  
(accommodation partners)

9

#### Cottage "La Villasatel"

Carrières d'Euville  
55200 Euville (Map datum: B5)

Tel.: +33 (0) 329 913 310  
contact@villasatel.fr  
www.villasatel.fr  
> 50 people



European Tree Frog

#### Wildlife information Centre d'animation des Carrières d'Euville

55200 Euville

Tel.: +33 (0) 329 913 316

#### LPO Garden Jardin sous les Côtes

55300 Apremont-la-Forêt

Tel.: +33 (0) 329 904 090



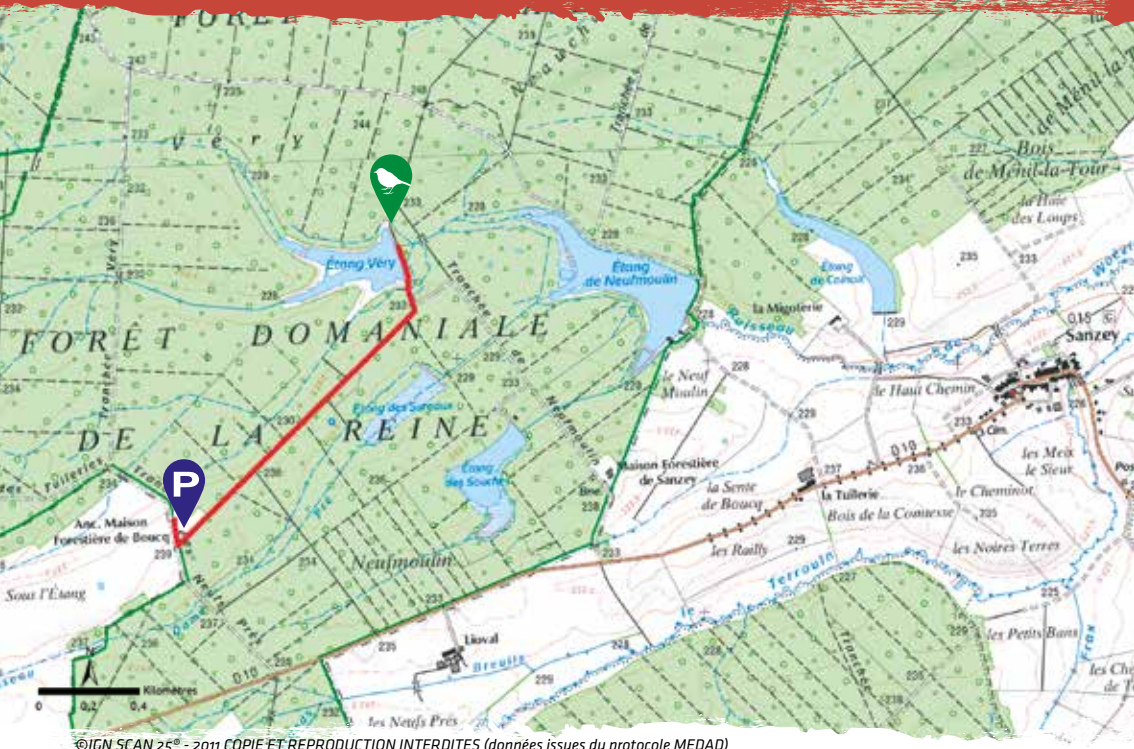
#### Shop (local products) Aux Douceurs Lorraines

10 place du fer à Cheval  
55200 Commercy

Tel.: +33 (0) 329 907 879

## Birds, Dragonfly and others (Area 6)

### FORÊT DE LA REINE.



©IGN SCAN 25<sup>e</sup> - 2011 COPIE ET REPRODUCTION INTERDITES (données issues du protocole MEDAD)

Hike: 2 km (1.24 miles) / 30 minutes

Place to leave your car Most interesting area

At the foot of the Meuse Hills, the Reine Forest is a humid forest of 5 000 ha. It includes more than a dozen natural freshwater ponds. An interesting site for naturalists but beware, some of the ponds are inaccessible.



### To be seen in the area:

#### Birds:

Collared Flycatcher • Honey Buzzard • Middle Spotted Woodpecker • Red Kite • Black Kite • Eurasian Hobby • Marsh Harrier • Eurasian Bittern • Black Stork • White-tailed Eagle • Osprey • Northern Goshawk • Common Crane • Red-backed Shrike

#### Dragonfly:

Mercury Bluethroat • Yellow-spotted Whiteface • Lilypad Whiteface • Eurasian Basket Tail

#### Others:

Marsh Fritillary • Large Copper • European Tree Frog • Wild Cat • bats • newts



Collared Flycatcher



### Where to sleep? (accommodation partners)

10

#### Cottage "Château de Manonville"

54385 Manonville (Map datum: C4)

Tel.: +33 (0) 383 234 950

contact@gites54.com

www.gites54.com

> 2 cottages (12 people and 4 people)

> Collection of stuffed birds of Baron Hamonville, a famous nineteenth century Lorraine ornithologist.

#### Wildlife information Parc naturel régional de Lorraine

Tel.: +33 (0) 383 846 767

www.pnr-lorraine.com



#### Shop and Restaurant (local products) Le Caveau

6 rue Victor Hugo  
54200 Brûley

Tel.: +33 (0) 983 892 440  
littlorrainesarl@gmail.com  
Open from Monday to Sunday

## Birds, Orchids and Butterflies (Area 7)

### ARNAVILLE, THE MAD RUPT VALLEY AND THE RUDEMONT LIMESTONE GRASSLAND.



©IGN SCAN 25° - 2011 COPIE ET REPRODUCTION INTERDITES (données issues du protocole MEDAD)

Hike: 3.2 km (1.99 miles) / 1 hour

Place to leave your car Most interesting area

This limestone grassland overlooks the confluence of two rivers, the Rupt-de-Mad and the Moselle. These habitats, located on shallow soils of the plateaus and south-facing slopes have southern affinities.

The fauna and the flora are particularly suited to dry conditions and summer heat. Many rare and protected species are present: orchids, insects, reptiles ...

The site combines floral and archaeological attractions and offers panoramic views of the valleys.



To be seen in the area:

#### Birds:

Red-backed Shrike • Common Kingfisher • Grey Wagtail • Cirl Bunting • White-throated Dipper

#### Orchids and others plants:

Orchids : 18 species ( Mueller's Helleborine • Small-leaved Helleborine • Monkey Orchid • Violet Limodore...) • European Michaelmas-daisy • Haller's Sedge

#### Butterflies:

Large Blue • Burnet Moths • Marsh Fritillary



Where to sleep?  
(accommodation partners)

11

#### Bed and Breakfast "Les Chataigniers"

57680 Novéant-sur-Moselle (Map datum: D3)

Tel.: +33 (0) 387 699 341  
elisa.bitton@orange.fr  
monsie.orange.fr/leschataigniers  
> 2 rooms

12

#### Bed and Breakfast or sleep in the trees

Cabanes en Lorraine  
57130 Ancy-sur-Moselle (Map datum: D3)

Tel.: +33 (0) 668 598 354  
obstetar.marc@bbox.fr  
www.cabanes-lorraine.com  
> 4 treehouses (16 people)



Late Spider Orchid

#### Wildlife information Conservatoire d'espaces naturels de Lorraine

Tel.: +33 (0) 387 030 090  
www.cren-lorraine.com



#### Shop (local products) Epi A Lor'

1 rue Nivoy  
54530 Pagny-sur-Moselle  
Tel: +33 (0) 687 417 055

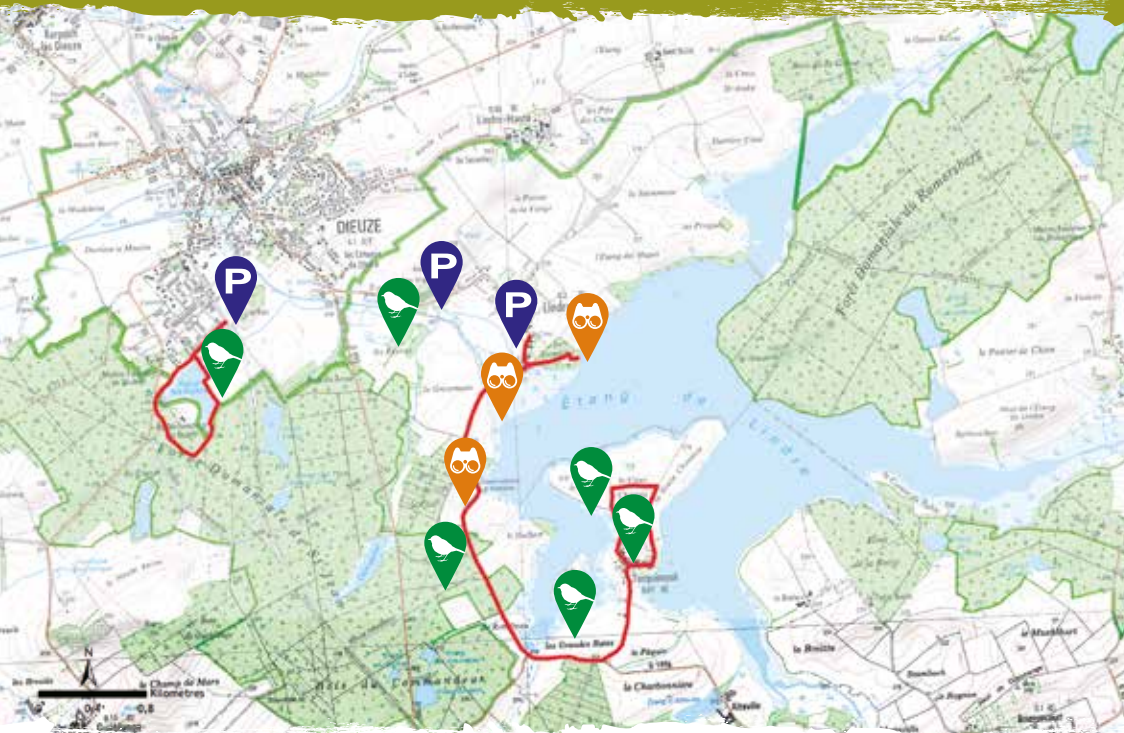


#### Boucherie épicerie Saint-Clément

6 Place de la République  
57130 Ancy-sur-Moselle  
Tel: +33 (0) 387 311 937

## Birds, Orchids AND Butterflies (Area 8)

### LINDRE LAKE (A FRAGILE NATURAL AREA) AND THE ROMERSBERG FOREST WETLAND INTERPRETATION TRAILS (LINDRE AND "LES ESSARTS").



Extraits des fonds cartographiques - IGN Paris 2015 - Autorisation n°70 15001

Short hike: 2 km (1.24 miles) / 45 minutes  
Long hike: 9 km (5.59 miles) / 3 hours

Place to leave your car Most interesting area Public hide

This natural site (RAMSAR) that is used by a large diversity of birds covers 970 ha. It consists of 12 fishponds, meadows, reedbeds, forests and marshes. Three bird hides offer a view of the lake and reedbeds. A wetland interpretation trail provides views of the lake and the Tarquimpol peninsula. Romersberg forest (420 ha), inserted between the two major branches of Lindre lake forms, with other large nearby forests, a vast forest corridor that is a breeding site for Collared Flycatcher, emblem of Lorraine ornithology.

The Essarts Pond Trail: A 3 km long trail that allows for the observation of the lake's birds.



### To be seen in the area:

#### Birds:

Purple Heron • Little Bittern • Greylag Goose • Black-necked Grebe • Garganey • Red-crested Pochard • Osprey • Marsh Harrier • Black Kite • Savi's Warbler • Bluethroat • Middle-spotted Woodpecker • White and Black Stork • Wood Sandpiper • Red-throated Diver • White-tailed Eagle • Aquatic Warbler • Collared Flycatcher • Greet Reed Warbler • Marsh Warbler • European Stonechat • Eurasian Tree Sparrow • Lesser Spotted Woodpecker • Eurasian Hobby • Honey Buzzard • Wood Warbler • Eurasian Golden Oriole



### Where to sleep? (accommodation partners)

13

#### Bed and Breakfast "Château d'Alteville"

57260 Tarquimpol (Map datum: G4)

Tel.: +33 (0) 387 054 663  
chateau.alteville@free.fr  
www.chateaudalteville.com  
> 5 rooms

14

#### Bed and Breakfast "Château de Romécourt"

57810 Azoudange (Map datum: G4)

Tel.: +33 (0) 387 866 735  
romecourt@nordnet.fr  
www.chateauderomecourt.com  
> 2 rooms



White-tailed Eagle

### Wildlife information Domaine de Lindre

Tel.: +33 (0) 387 350 280  
www.domainedelindre.com

### Parc animalier de Sainte-Croix

Tel.: +33 (0) 387 039 205  
www.parcsteincroix.fr



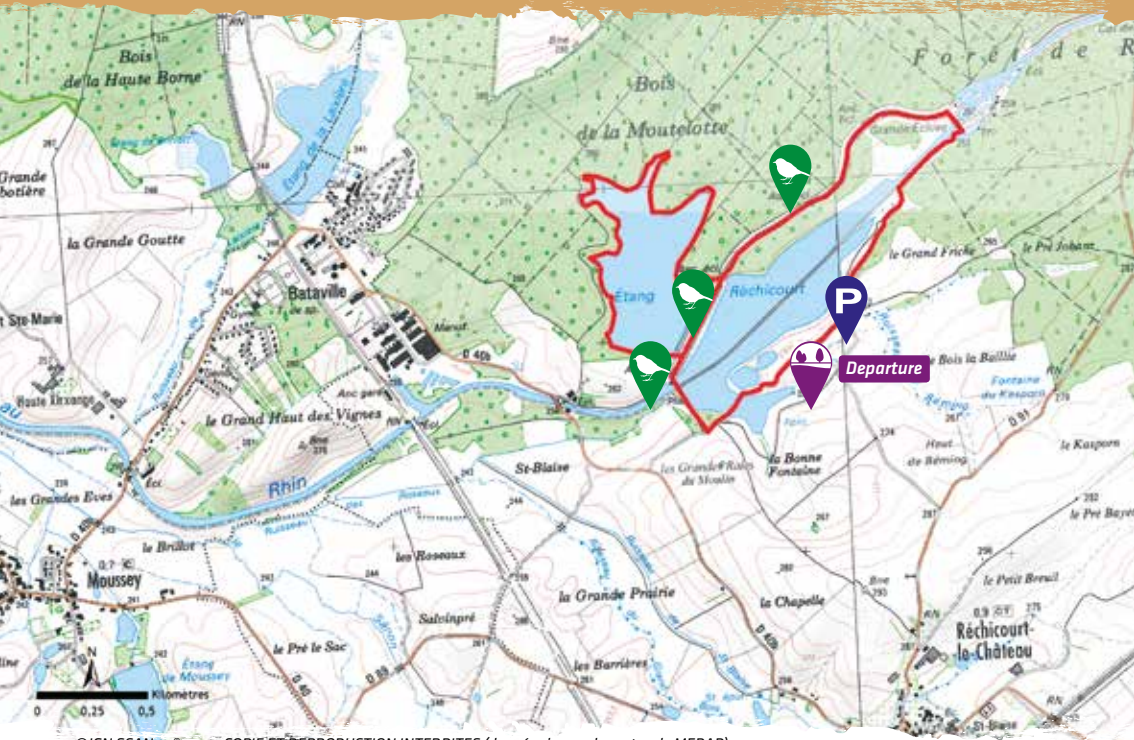
### Shop (local products) La Corbeille Lorraine

15 bis rue Principale  
57670 Montdidier

Tel.: +33 (0) 387 014 586  
www.corbeille-lorraine.fr

## Birds, Dragonfly, Butterflies (Area 9)

### RÉCHICOURT WETLAND AND ARBORETUM.



©IGN SCAN 25° - 2011 EOPIE ET REPRODUCTION INTERDITES (données issues du protocole MEDAD)

Short hike: 5.5 km (3.42 miles) / 2 hours  
Short + long hike: 9 km (5.59 miles) / 3 hours

Place to leave your car Most interesting area Interpretation trail

Réchicourt wetland is an association of a canal, streams associated with their riverine forest, wet woodlands, ponds (mainly forest) and fishponds with their reedbeds. There is much of ecological interest here with many protected birds and amphibians, such as the Tree Frog. Dry grasslands on the edge of the Réchicourt fishpond host some rare and protected plant, butterfly and dragonfly species.



### To be seen in the area:

#### Birds:

Purple Heron • Great Egret • Red-backed Shrike • Greet Reed Warbler • Aquatic Warbler • Water Rail • Little Bittern • Spotted Crake • Marsh Harrier • Eurasian Penduline Tit

#### Dragonfly:

Mercury Bluet

#### Butterflies:

Large Copper • Marsh Fritillary

#### Insects:

Praying mantis • New Forest Cicada



### Where to sleep? (accommodation partners)

15

#### Cottage "Le Pré Florentin"

57810 Réchicourt-le-Château (Map datum: G5)

Tel.: +33 (0) 387 375 769 / 763  
Mid-week is possible (4 nights - Friday to Sunday)  
mairie-rechicourt@wanadoo.fr  
www.rechicourt-le-chateau.fr  
> 8 people

16

#### Bed and Breakfast "Le Logis Bataville"

57770 Moussey (Map datum: G5)

Tel.: +33 (0) 684 795 306  
ghislain.gad@neuf.fr or le.logis.bataville@sfr.fr  
www.le-logis-bataville.com  
> 5 rooms

17

#### Aboard a ship along the canals

57810 Lagarde (Map datum: G5)

Tel.: +33 (0) 387 866 501  
contact@navifrance.com  
www.navifrance.com



Banded Demoiselle

### Wildlife information Conservatoire d'espaces naturels de Lorraine

Tel.: +33 (0) 387 030 090  
www.cren-lorraine.com

## Birds and others plants (Area 10)

### SALT MARSHES AND PONDS DISCOVERY TRAIL.



©IGN SCAN 25° - 2011 COPIE ET REPRODUCTION INTERDITES (données issues du protocole MEDAD)

Hike: 30 minutes

Place to leave your car Most interesting area Interpretation trail

Away from the coast, salt marshes and ponds are a very rare habitat.

The Seille valley in the Lorraine is the largest site in mainland France.

The presence of salt formations which date back over 200 million years is the reason for this ecosystem where a salt-tolerant flora has developed along with a specific fauna (insects able to live in salty environments).



Six-spot Burnet



To be seen in the area:

#### Birds:

Eurasian Curlew • Whinchat •  
European Stonechat • Corn Crane •  
Corn Bunting • Green Sandpiper •  
Common Quail • Savi's Warbler •  
Water Rail • Common Nightingale •  
Little Owl

#### Plants:

Samphire (late summer) •  
Baudot's Crowfoot • Saltmarsh Rush •  
Bulbous foxtail • Marsh Mallow •  
Barley-eared Sedge • Seaside Sandwort •  
Sea aster • Sea arrowgrass



Little Owl



Where to sleep?  
(accomodation partners)

18

#### Cottage "Le pavillon du Gouverneur"

57630 Marsal (Map datum: F4)

Tel.: +33 (0) 387 011 454

[www.gites57.com](http://www.gites57.com)

> 4 people

Wildlife information  
Conservatoire d'espaces naturels  
de Lorraine

Tel.: +33 (0) 387 030 090

[www.cren-lorraine.com](http://www.cren-lorraine.com)

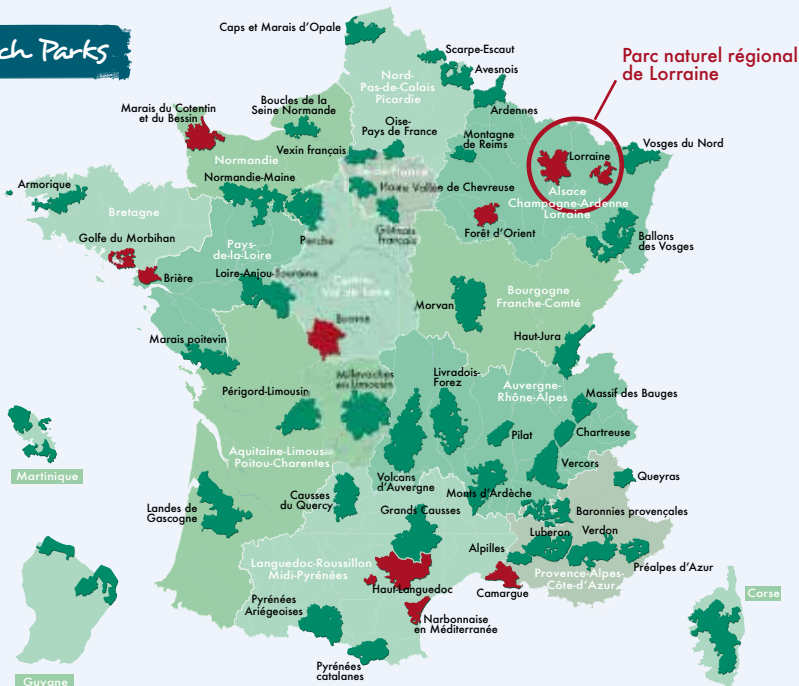
Musée départemental du Sel

57630 Marsal

Tel.: +33 (0) 387 350 150

[www.cg57.fr](http://www.cg57.fr)

# French Parks



■ Parks that have published a booklet entitled "Where to watch birds (and other wildlife) in Parc naturel régional".

[www.parc-naturels-regionaux.fr/en](http://www.parc-naturels-regionaux.fr/en)



## Illustrations:

Carole Pourcher  
Find his work on:  
[carolepourcher.blogspot.fr](http://carolepourcher.blogspot.fr)

## Parc naturel régional de Lorraine

Maison du Parc

Logis Abbatial  
Rue du Quai - B.P. 35  
54702 Pont-à-Mousson Cedex

Tel.: +33 (0) 383 816 767  
[www.pnr-lorraine.com](http://www.pnr-lorraine.com)



Région **ALSACE**  
**CHAMPAGNE-ARDENNE**  
**LORRAINE**

