



## Where to see birds (and other wildlife)

in Foret d'Orient regional nature Park



Parc  
naturel  
régional  
de la Forêt d'Orient

The Foret d'Orient regional nature park constitutes a site of major ornithological interest, by the diversity of its aquatic, paludal and terrestrial fauna and because of its strategic location in relation to the migratory routes of the avifauna of the western Palearctic ecozone. Over 220 bird species have been registered around the big lakes (78 breeding, 97 migrant, and 39 winter visitors). For your convenience, we have listed the best time and place to see some rare species exclusive to our park.





See below the list of Panda Gites. Ask our Central tourist office for the complete list of accommodation around the lakes, or check on line on [www.lacs-champagne.fr](http://www.lacs-champagne.fr)

## Rural Gites / Panda Gites



**Villehardouin** : Mr and Mrs Meurville, located 3 miles north of the Temple lake dike, 3 épis 5 bedrooms, 35€/1pers – 50€/2pers – 62€/3pers – 85€/5-6 pers.

Also table d'hôte (evening meal).

Tel : +33 3 25 46 40 28 - Fax : +33 3 25 46 32 39  
[jp.meurville.dethune@wanadoo.fr](mailto:jp.meurville.dethune@wanadoo.fr)

**La Villeneuve-au-Chêne** : Mr and Mrs Prevot, located 5 miles south of the Temple lake and Orient lake's birds hide, 3 épis 5 bedrooms, from 46 to 54 €/2pers.

Also table d'hôte (evening meal).

Tel / Fax : +33 3 25 81 64 05

<http://la-renouillere.pagesperso-orange.fr>



**Lesmont** : Mr Bradier, located 7 miles north of the Temple lake dike, 3 épis 5 bedrooms, from 60 €/2pers.

Tel / Fax : +33 3 25 92 00 70

[www.domainedeslacs.com](http://www.domainedeslacs.com)

Prices include breakfast.

Table d'hôte with local produce.

The diversity of the landscapes linked to a convergence of biogeographical influences (continental, mountain), as well as a privileged situation regarding the main migration routes of European avifauna, give this territory an important heritage value.

The Regional Nature Park constitutes a site recognized by the international community as a humid zone of international importance, notably for water birds, according to the Ramsar Convention. The Park also has several sites of communal interest that is for the birds or the habitats of the wild flora and fauna. Finally, the Park shelters many zones of national ecological interest, with remarkable animal and plant species, some of which are protected by law.



## Track A

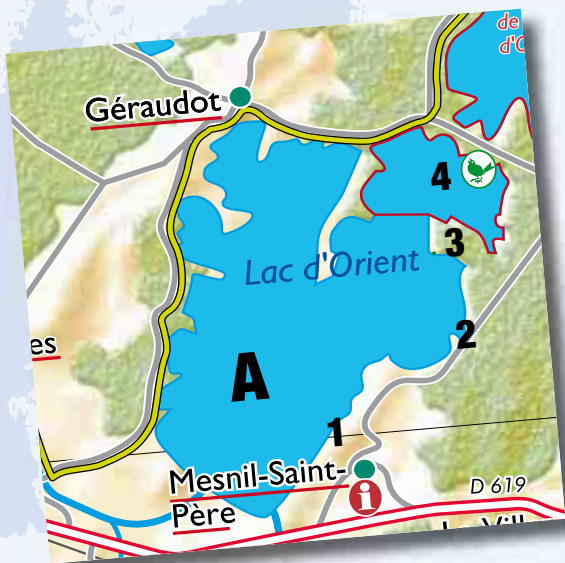
The Orient lake

6 km / 3,7 Miles

IGN map 25/1000 Piney

### Birds to be seen :

**1** - Mesnil harbour during the nesting period, the **Red-Necked Grebe** nests here since 2006, on the left side of the pier. A beautiful colony of **House Martin** lives in the Harbour office “La Maison des Lacs”. You can also hear the **Serin** from here. The harbour hosts a big colony of **Laridae**, including **Black-headed Gulls** and **Mediterranean Gulls**.



**2** - **Black-Terns** and **Black-necked Grebe** off-shore. On the way to “La Maison du Parc”, the central tourist office, make a stop at the small car park on your left, overlooking the lake, protected from the wind, the **Greylag Geese** like that cove. And the **White-tailed Eagle** often have a rest on the tree stubs.

Color code : **Spring and Summer**, **Winter**, **Migration**, **All year long**.







**3** - Further up you reach the Wild animal park “Espace Faune de la Forêt d'Orient”. A park with 4 observatories to see stags, deers, Aurochs (genetically reformed), European elks etc.. This peninsula surrounded by the Orient's Lake also hosts many Woodpeckers (Middle- spotted and black), Melodious Warblers, Black storks and Hoopoes. 100's of Red Crested Pochards come to moult with other Pochards. The forest is a nesting place for the Nightingales, Orioles, Great-spotted Woodpeckers and the bird hides hosts the Black Redstarts.

**4** - The last point (or the 1st one) is at the bird hide, where you can also spot some foxes and wild cats. Goosanders, Smews, Peregrines hunting Black-headed Gulls. Greylag Geese, Great White Egret, Pochards and sometimes Eiders.

Black Storks and Purple Herons also come here (1st site for post-nuptial gathering).





# Parc naturel régional de la Forêt d'Orient

## LÉGENDE

- Office de Tourisme / Point Information  
Tourist Office / Information Point
  - Réserve naturelle  
Nature reserve
  - Table panoramique  
Orientation table
  - Espace Faune  
Wildlife Park
  - Observatoire ornithologique  
Bird observatory
  - Golf de la Forêt d'Orient  
Golf course
  - Parcours dans les arbres Grimpobranches  
Tree walking
  - Ferme Pédagogique de la Marque  
Open farm
  - Voie Verte - Vélovoie  
Cycletrack
  - Bateau promenade et Petit train  
Boat trip - Tourist Train
  - Moulin à vent  
Windmill
  - Ecomusée / Musée Napoléon  
Ecomuseum / Museum Napoleon
- Limite du Parc naturel régional de la Forêt d'Orient  
Boundary of the Forêt d'Orient Regional Nature Park  
 Limite Réserves Naturelles  
Boundary of the Nature Reserves  
 Limite du département  
Boundary of the Aube  
 Limite du département  
Boundary of the Aube

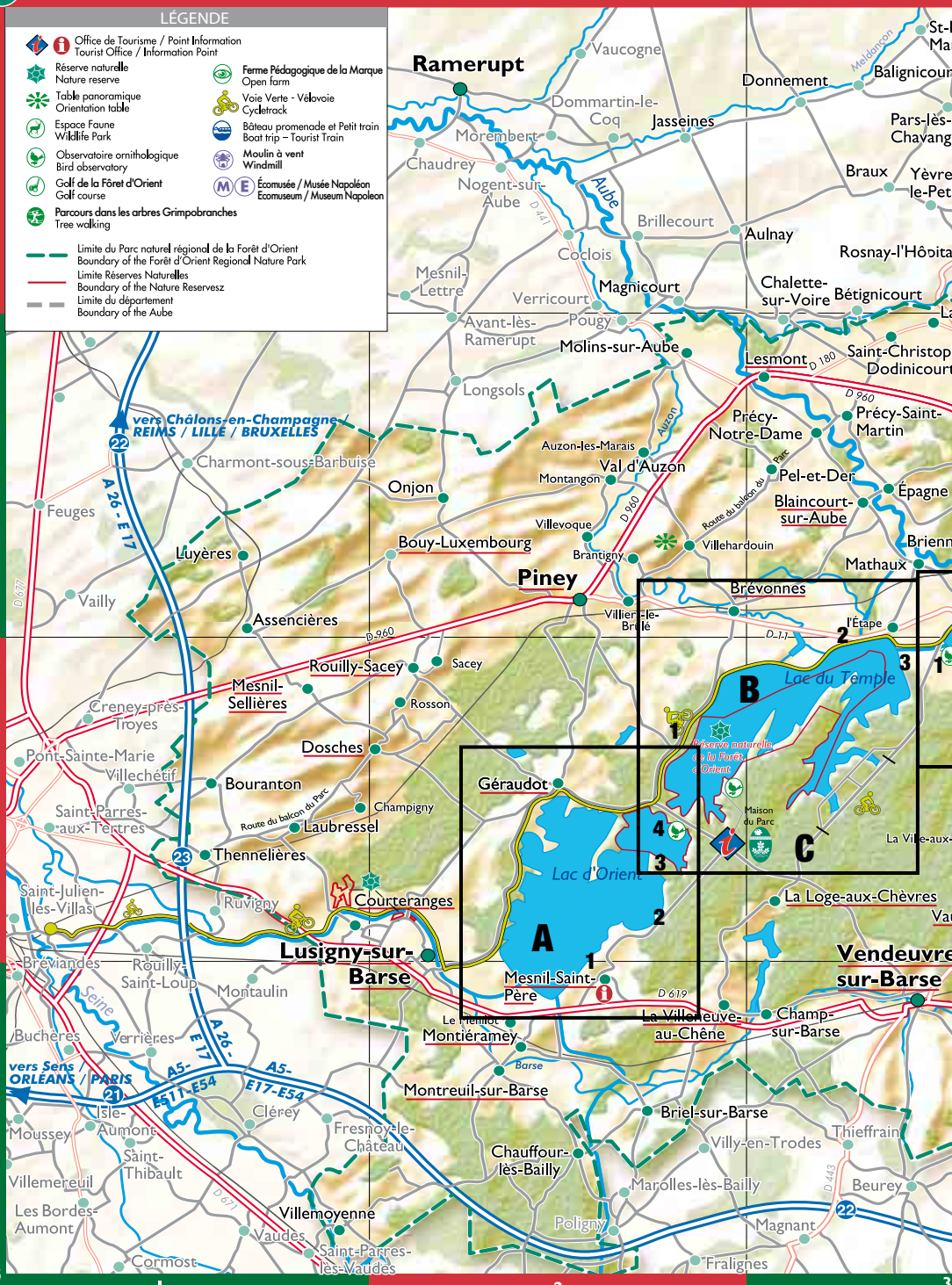
A

B

C  
vers Troyes (2 km)

D

6



2

3



# Prêt d'Orient - Sites

Un territoire à vivre



Cartographie ACTUELLE - 13 (03 25 71 20 1387)  
Métropole de Champagne-Ardenne - 52 (03 25 71 20 1387)  
Métropole de Bourgogne - 71 (03 25 71 20 1387)

vers Colomby-les-deux-Églises (8 km) ↙



## Track B

The Temple lake  
6 km / 3,7 Miles  
IGN map 25/1000  
Piney

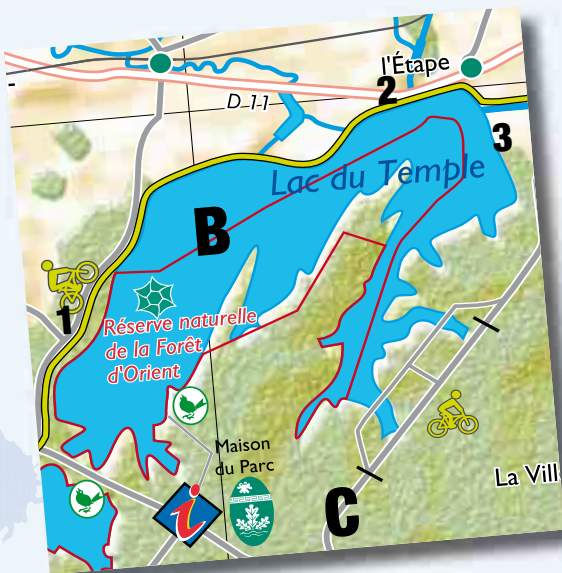
### Birds to be seen :

- 1 - At the dike near Brevonnes, stop at the wooden steps going onto the dike. This is the best spot to see the **White-tailed Eagles**, **Cranes**/**Cranes**, **Greylag Geese**.

Look for the **Goosanders** and **Smews** in the old ponds (they re-appear in the middle of the lake when the water is low).

**Black Storks** love to come in the muddy spots of the lake. Also the **Osprey**, **shorebirds**, as the **Grey Plover**.

- 2 - Still on the dike, on the way to Radonvillers, make a stop at the water heritage site (near "L'Étape") thousands of **Cranes** use this site as a dormitory. **Greylag Geese** and some **Gulls** pasture the



lawns of the National Nature reserve that used to be flooded.

- 3 - You reach the end of your track at point aka "Le Caron". From there, look for the **Great Grey Shrike** and the **Water Pipit** on the bank of the lake. The forest nearby hosts, **Goshawks**, **Hawfinches**, **Bramblings**, and also **Firecrests**, **Crested Tits** and some **Golden Orioles**.







## Track C

The Salamanders' trail in the Temple Forest Road  
2,5 km / 1,5 miles  
IGN map 25/1000 Piney  
Starting from the Temple forest roundabout.

Signposted path where you can often spot the **Black and Middle-spotted woodpeckers**, the **Grey-headed woodpeckers**, **Melodious Warbler**, **Wood Warblers**, **Marsh tits**, **Golden Orioles**, **Firecrests**.

You can also follow the Temple Forest Road, up to the “Fontaine aux Oiseaux”, where you

can spot the **Black storks**. The **Red-backed Shrike** also nests here.

Also to be seen, in the “Balcon du Parc”, (north-west of the park) around the villages, of Laubressel, Dosches, Mesnil-Sellieres, **Montagu's Harrier**, **Hen Harrier/Hen Harrier**, **Common Quail**, **Stone Curlews**, **Crested Larks**, **Hoopoes**, **Wrynecks**, **Little Owls**, **Long-eared Owl/Long-eared Owl**.

Color code : **Spring and Summer**, **Winter**, **Migration**, **All year long**.

## Track D

The Amance Lake

12 km / 7.5 Miles

IGN map 25/1000 Brienne-le-Chateau

### Birds to be seen :

The track starts nearby the junction canal in Radonvillier, on the “Caron” road. Follow the gravel road and you will find the bird hide on your left, overlooking the lake's banks surrounded by willows and reeds.

**1** - At the birds hide, you can spot many [Bewick's swans](#) as this lake is their favourite place in France to rest. Among the swans you can also find our 3 “divers”, (the [Great Northern](#), the [Red-throated](#) and the [Black-throated diver](#)), [Grebes](#), [Greylag geese](#), [Shelducks](#), [White-winged Scoters](#) and [Goosanders](#).

**2** - Walking south-east along the lake, follow the gravel road between the lake and the forest and stop at the little wooden bridge called “Le Bouchot” You should



come across some [Hen Harriers](#), [White-tailed Eagles](#), [Dunlins](#), [Golden plovers](#), and [Sandpipers](#).

Standing on the big oaks, the [Peregrine](#) is on the look out mostly all winter.





- 3** - Try to spot the **Great Grey Shrike** in the wild berry bushes. Also to be seen, **Crested grebes**, **Little Bitterns**, **Red-crested Pochards**, **Marsh Harriers**, **Hobby Falcons**, **Warblers** ( reeds, sedges), **Terns** (some white winged), **Gulls**, **divers**, **Black Scoters** and many diving ducks.
- 4** - You can find some **Goosander**, **Red-breasted Mergansers** and sometimes smews.
- 5** - Finally, walk to the bridge, pass by the detached

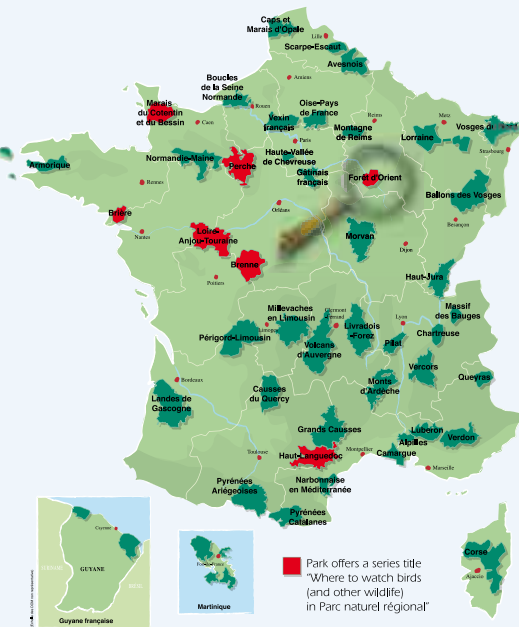
house “Pavillon Henri”, follow the Amance brook, up to the feeder canal to spot some **Great-white Egret**, **Ospreys**, **Honey Busards**, **Woodpeckers** (**Grey-headed**, **Middle-spotted** and **Black**).

**TIPS** : Begin your search for the birds at the end of the day, in order to get a good lighting. Start from Dienville-harbour, at the north of the lake.

**Color code** : **Spring and Summer**, **Winter**, **Migration**, **All year long**.



# The Forêt d'Orient regional nature park, one of France's 46 Parcs naturels régionaux



**Parc naturel régional de Brière**  
<http://www.parc-naturel-briere.fr>

**Parc naturel régional de la Brenne**  
<http://www.parc-naturel-brenne.fr>

**Parc naturel régional de la Forêt d'Orient**  
<http://www.pnr-foret-orient.fr>

**Parc naturel régional du Haut-Languedoc**  
<http://www.parc-haut-languedoc.fr>

**Parc naturel régional Loire-Anjou-Touraine**  
<http://www.parc-loire-anjou-touraine.fr>

**Parc naturel régional du Marais du Cotentin et du Bessin**  
<http://www.parc-cotentin-bessin.fr>

**Parc naturel régional du Perche**  
<http://www.parc-naturel-perche.fr>

## Office de tourisme intercommunal Parc naturel régional de la Forêt d'Orient

Maison du Parc - 10220 Piney - France

Tél: +33 3 25 433 888

Fax: +33 3 25 433 883

[info@pnrfo.org](mailto:info@pnrfo.org)

[www.lacs-champagne.fr](http://www.lacs-champagne.fr)



OFFICE DE  
 TOURISME  
 INTERCOMMUNAL

### Access

Located 1h30 drive, South-East of Paris.

Driving : From Motorways A5 (exits 21 or 22 and A26 (exits 22 or 23).

(Paris/Dijon and Calais /Marseilles axis) or

By train and bus : station in Troyes or Vendevre-sur-Barse.

Cycling : From Troyes : on the cycle track, 27km ride from St-Julien-les-Villas to Gérardot, and 42km to Dienville Harbour.

